

KP



# Oviposition and habitat preferences of the Duke of Burgundy

Kristina Persson



# Introduction



Threatened biodiversity

- because of intensive forestry and agriculture
- resulting in abandonment of pastures and meadows.

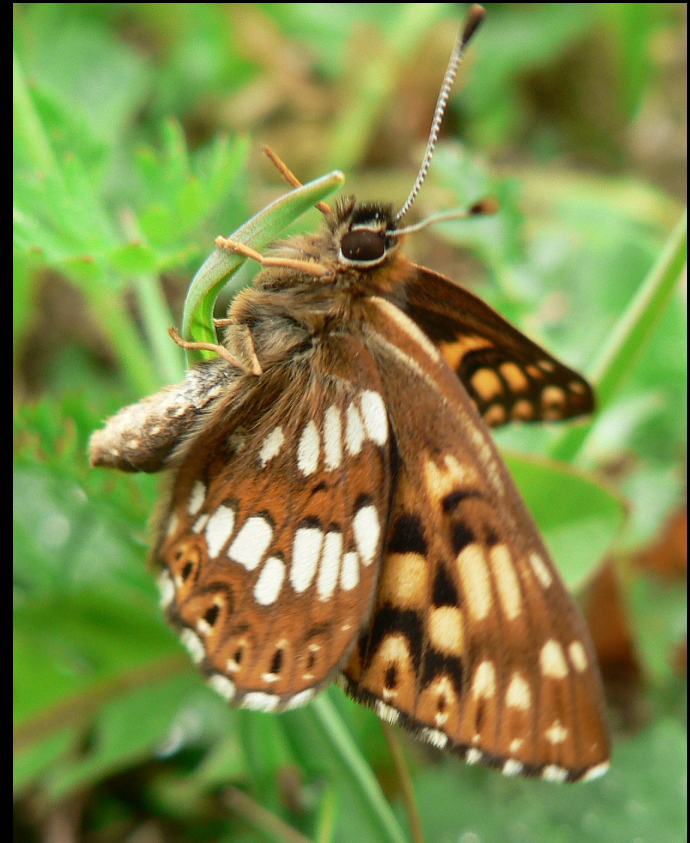
**Aim:**

**To find out the egg-laying and habitat preferences of  
the Duke of Burgundy**



# The Duke of Burgundy - *Hamearis lucina*

- ❖ Vulnerable
- ❖ *Primula veris*



# The study



If the plant was flowering

Height of the plant

Nitrogen content

Sward height

Number of leaves

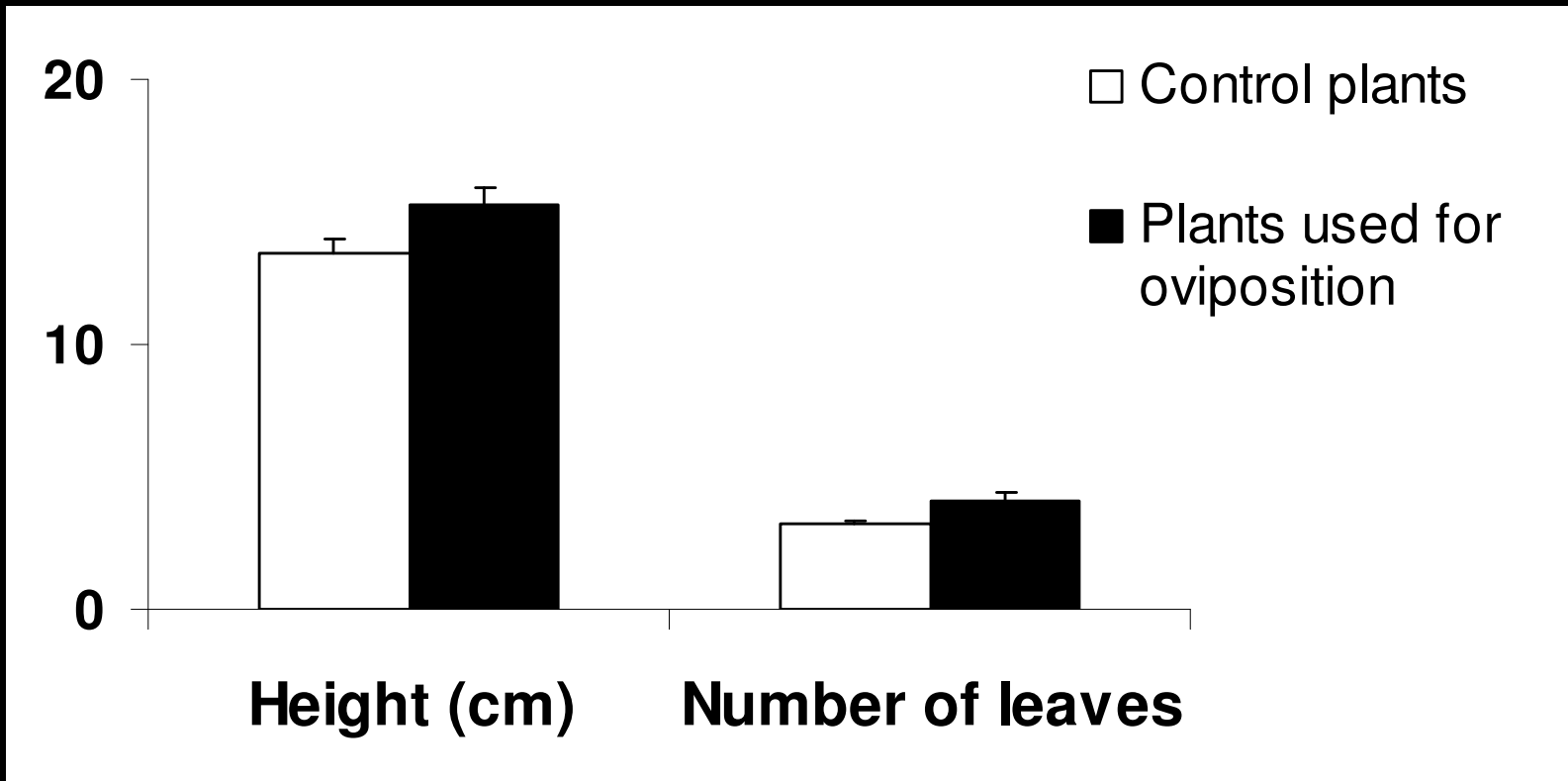
Cowslip density

Distance to nearest tree or bush



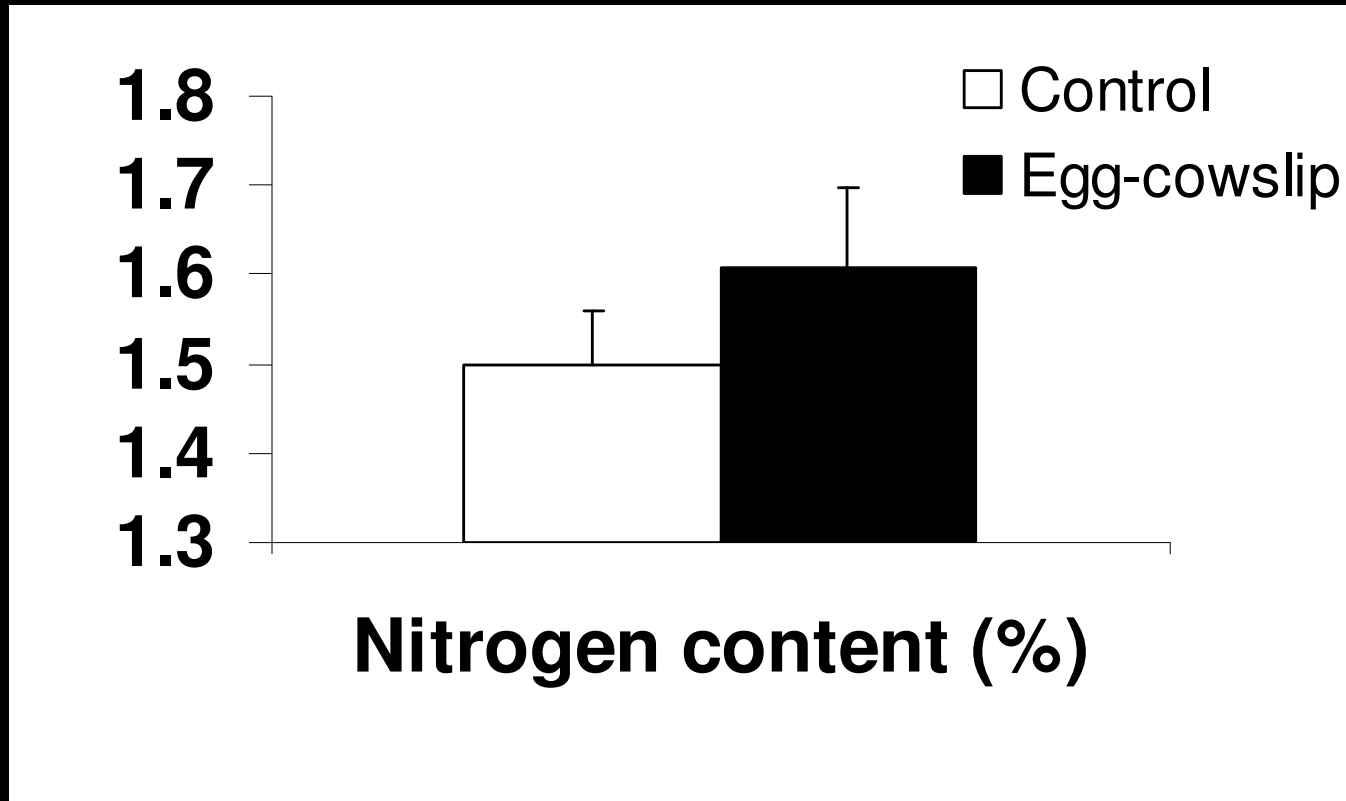
Cowslip (*Primula veris*)

# Results



**\* Taller plants with a higher number of leaves  
– more food for the larvae!**

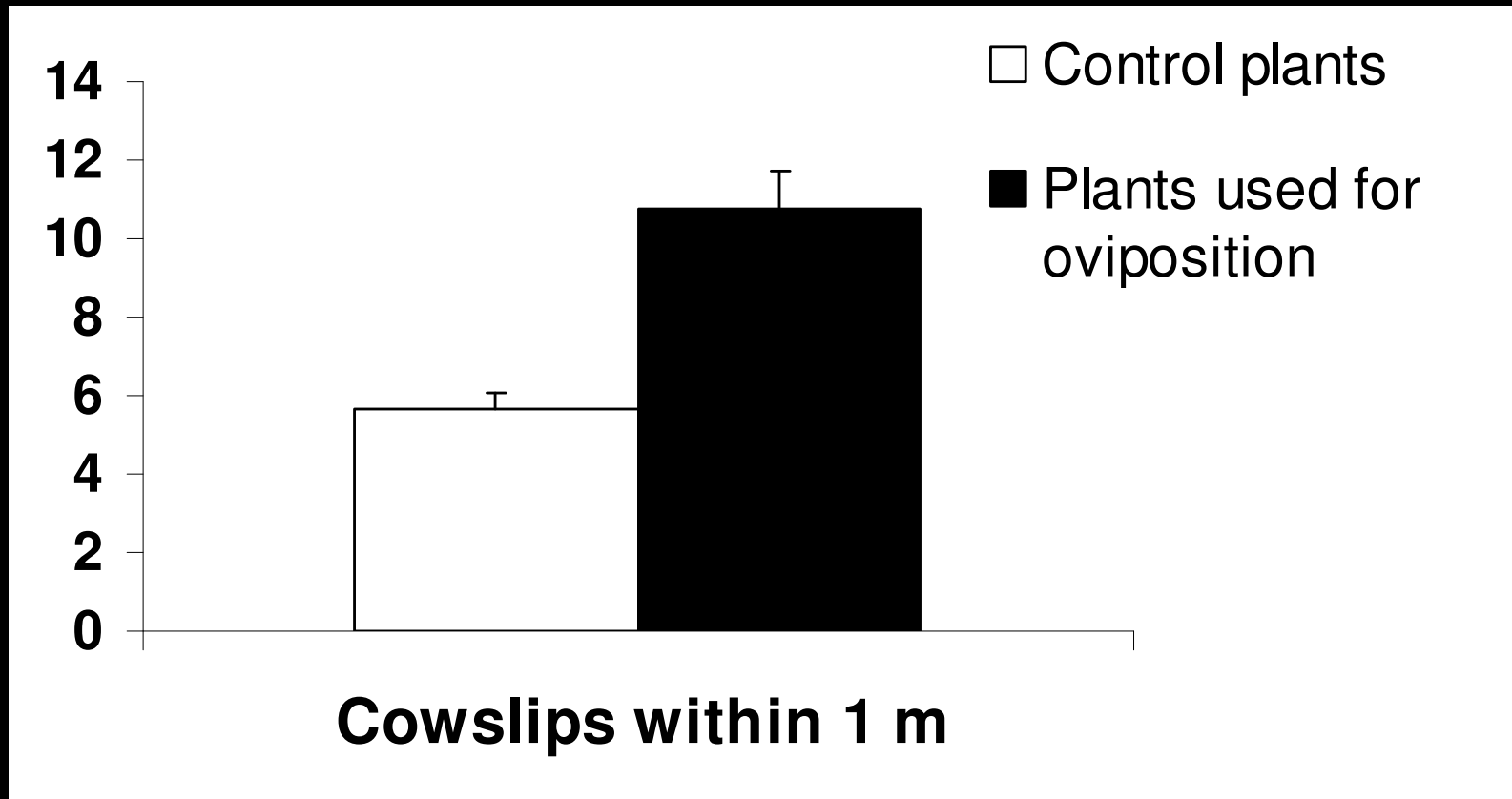
# Results



\* Higher nitrogen content

– possibly positive for larval growth!

# Results

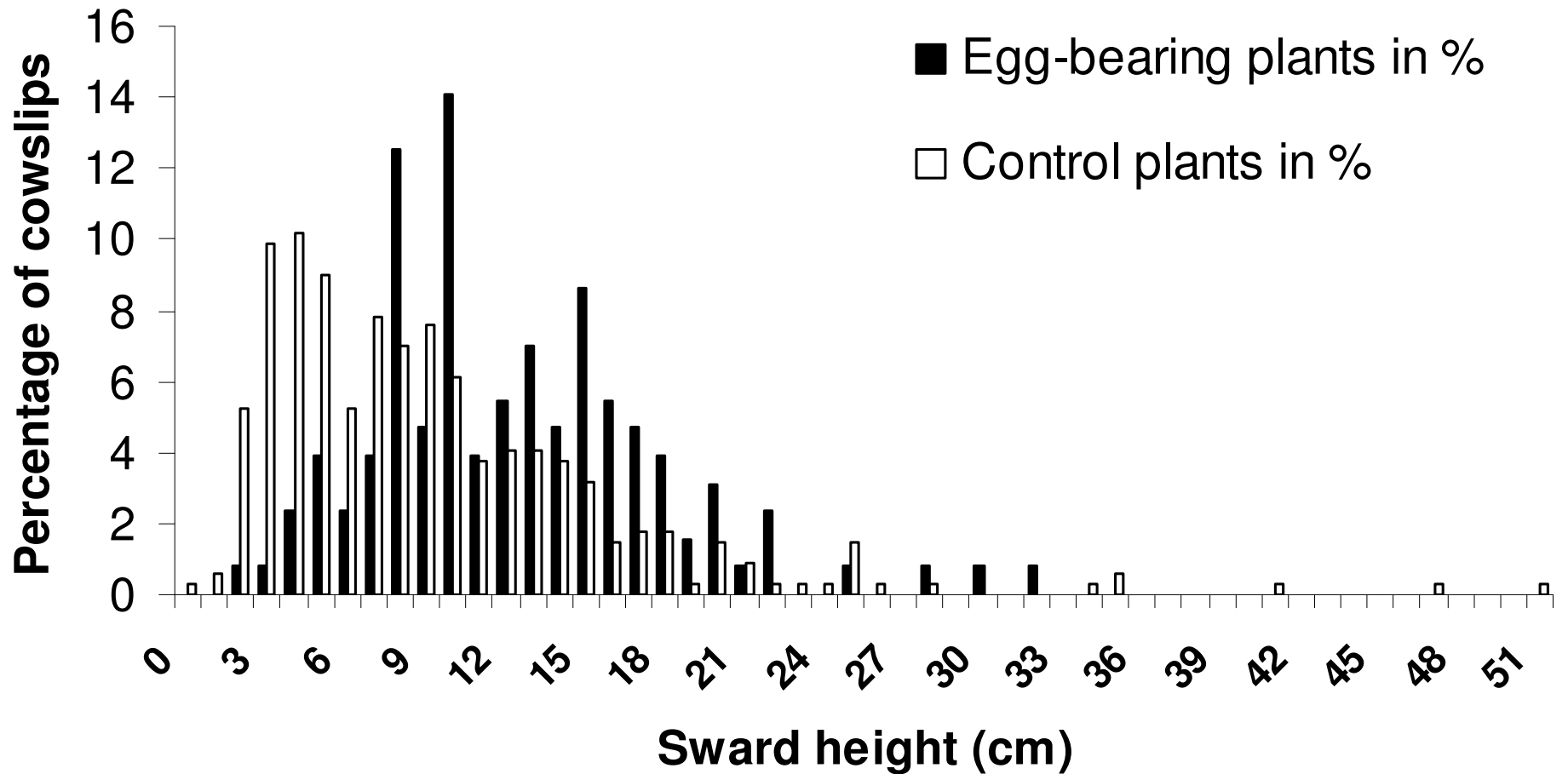


★ Higher density of cowslips

– closer for the larvae if they need to switch plant!



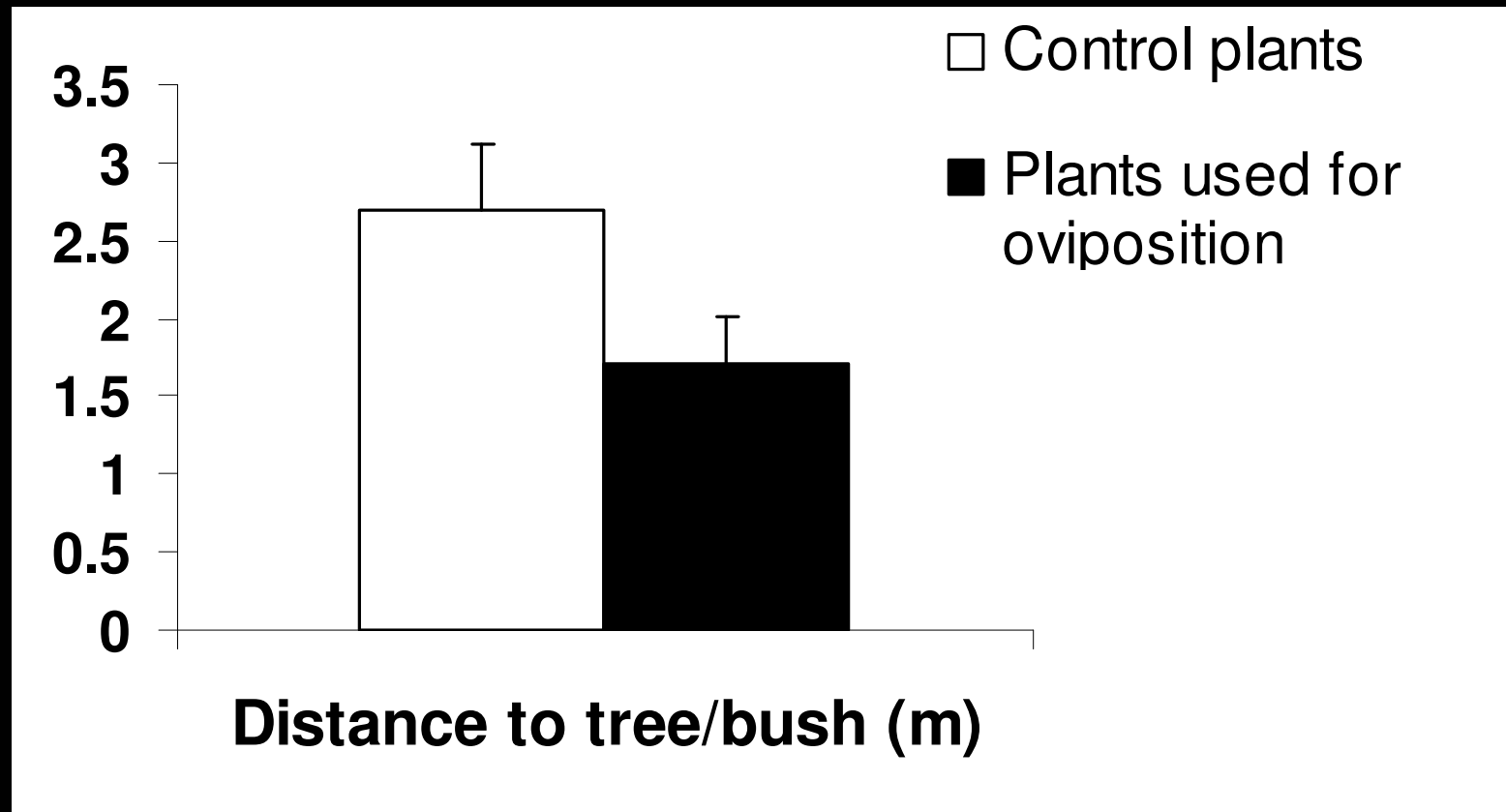
# Results



★ Tall sward is good for protection

– a too tall sward outcompetes the cowslips!

# Results



\* Closer to tree or bush

– protection of host plant and eggs!

# Conclusion



**A suitable habitat for the Duke of Burgundy should:**

- × contain areas with high densities of cowslips**
- × be lightly grazed**
- × be rich in bushes and woodland edges.**